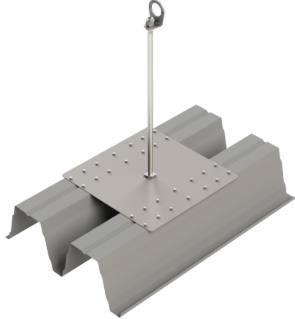


EAE SAFEX ESE TR



Stainless steel anchorage point with footplate made of powder-coated ST, for bolting to trapezoidal plate supporting shell, including swivel eye bolt

The specification text is only available on request.

Requirements of subsurface:

- Trapezoidal steel plate supporting shell EN 1993-1-3 (positive position)
- Height of trapezoidal plate 85 – 160 mm + 205 mm
- Nominal plate thickness tN min. 0.75 mm

Mounting materials:

- 28 x drilled fasteners type: SL2-6.3 x 28

Standards / Approval / Number of users:

- DIN EN 795:2012 Type A for 1 person
- CEN/TS 16415:2013 for 4 people
- DIBt approval Z-14.9-725 for 3 people

Support height	For roof height	Item no.
300 mm	up to 150 mm	4616 3000
400 mm	up to 250 mm	4616 4000
500 mm	up to 350 mm	4616 0000
600 mm	up to 450 mm	4616 6000

Customised production of support heights up to max. 1000 mm available.