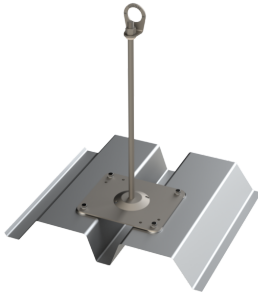


SAFEX-ESE MULTI – TR



Stainless steel anchorage point for securing to trapezoidal sheet supporting shell, including rotating eye bolt.

Standards / approvals for the anchorage device:

- EN 795:2012 Typ A for 1 person
- CEN/TS 16415:2013 for 3 persons

“SAFEX-ESE MULTI – TR” anchorage system:

Article number: 60300000
Construction height: 300 mm to 1000 mm (+45 mm thread M16)
Material: Stainless steel A2
Rod: Ø 16 mm
Base plate: 210 mm x 250 mm

Roof structure / substrate material data:

Substrate	Dimensions
Steel trapezoidal profile	EN 1993-1-3
Trapezoidal profile height:	50 to 160 mm + 205/375 mm – in positive position
Nominal plate thickness tN	at least 0.75 mm

SAFEX-ESE MULTI has been tested and certified according to EN 795:2012-Type A and CEN/TS 16415:2013 Type A. Both static and dynamic tests were conducted on the relevant original substrate.

GRÜN GmbH Spezialmaschinenfabrik
Siegener Straße 81 - 83 • 57234 Wilnsdorf-Niederdielfen
Tel.: +49 (0) 271 - 39 88-0 • Fax: +49 (0) 271 - 39 88-159

www.gruen-gmbh.de • info@gruen-gmbh.de

SAFEX-ESE MULTI is suitable as a substructure for fixing the intermediate rope holders of the horizontal anchorage system Greenline® (rope safety system) according to DIN EN 795 Type C.

SAFEX-ESE MULTI is **not** suitable for rope-assisted work (EN 795).