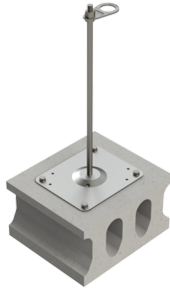


SAFEX-ESE MULTI



Stainless steel anchorage point for dowel fixing to hollow-core concrete slabs, including rotating eye bolt.

Standards / approvals for the anchorage device:

- EN 795:2012 Typ A for 1 person
- CEN/TS 16415:2013 for 4 persons

“SAFEX-ESE MULTI” anchorage system:

Article number: 60300000
Construction height: 300 mm to 1000 mm (+45 mm thread M16)
Material: Stainless steel A2
Rod: Ø 16 mm
Base plate: 210 mm x 250 mm

Roof structure / substrate material data:

Substrate	Dimensions	
Prestressed concrete hollow plates (min. C45/55)	Edge distance cmin 200 mm Plate level, above, hfmin 30 mm	DIN EN 1168:2011

The substrate must be part of the static base construction. In case of doubt, this should be checked by a structural engineer.

SAFEX-ESE MULTI has been tested and certified according to EN 795:2012 Type A. Both static and dynamic tests were conducted on the relevant original substrate.

SAFEX-ESE MULTI is suitable as a substructure for fixing the intermediate rope holders of the horizontal anchorage system Greenline® (rope safety system) according to DIN EN 795 Type C.

GRÜN GmbH Spezialmaschinenfabrik
Siegener Straße 81 - 83 • 57234 Wilnsdorf-Niederdielfen
Tel.: +49 (0) 271 - 39 88-0 • **Fax:** +49 (0) 271 - 39 88-159

www.gruen-gmbh.de • info@gruen-gmbh.de