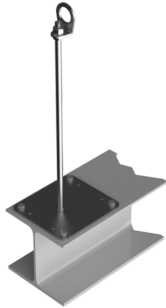


## SAFEX ESE



Stainless steel anchorage point for bolting to steel, including swivel eye bolt

Requirements of subsurface:

- Support width min. 130 mm
- Steel quality min. S 235

Mounting materials: Mounting kit item no. 4605 0000

- 4 x stainless steel screw M10 x 55
- 8 x washer U 10 DIN 125
- 8 x hex nut M 10 A2

Standards / Approval / Number of users:

- DIN EN 795:2012 Type A for 1 person
- CEN/TS 16415:2013 Type A for 4 people
- DIBt approval Z-14.9-725 for 4 people

Support height	For roof height	Item no.
300 mm	up to 150 mm	4600 SO14
400 mm	up to 250 mm	4600 SO17
500 mm	up to 350 mm	4600 0000
600 mm	up to 450 mm	4600 SO60
700 mm	up to 550 mm	4600 SO70

Customised support heights up to max. 1000 mm available.