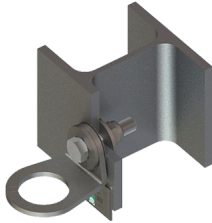


EAP GAP



Anchorage point with swivel eye bolt.

- For very limited work surfaces
- according to EN 795:2012 Type A, CEN/TS 16415:2013
- Anchorage point for 3 persons
- 360° rotation
- incl. fixing set for concrete or steel surfaces
- Stainless steel

Minimum requirements for mounting surface:

Concrete

reinforced standard concrete (cracked and uncracked)	DIN EN 206-1/A2
Strength class	C20/25 bis C50/60
Minimum component thickness h _{min}	120 mm
Edge distance dowel c _{min} – transverse load	150 mm
Edge distance dowel c _{min} – vertical load	100 mm

Metal

Steel	DIN EN 1993-1-1
Strength class	≥ S235
Minimum component thickness t _{min} (mm)	Tech. building regulations min. 5 mm
Edge distance c _{min} (mm)	Tech. building regulations